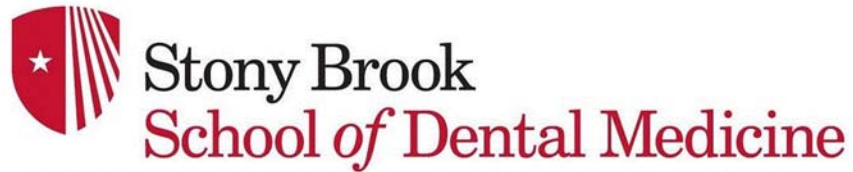


# International Advancement Program in Implant Prosthodontics

Register at  
<http://dentistry.stonybrookmedicine.edu/dental/coned>



# International Advancement Program in Implant Prosthodontics

The School of Dental Medicine at Stony Brook University is one of the leading dental schools in North America with a strong background in basic science, research and clinical dentistry. The School is committed to establishing a world recognized research, educational and patient treatment center for excellence in Implant Dentistry, Prosthodontics, Digital Technology and Periodontology.

The Office of Continuing Education envisions a program to invite scholars from the world to come and learn in a specific three day intensive program where we will discuss the diagnostic, surgical and prosthodontic keys to success in implant dentistry, supported by evidence-based criteria.

The International Advancement Program in Implant Prosthodontics at the School of Dental Medicine at Stony Brook University is designed for general dentists with some training in oral surgery, periodontology, prosthodontics or implant dentistry who are interested in incorporating the most advanced knowledge, technology and procedures into their daily practice. While attendees do not treat patients in the clinic, they will participate in sessions for treatment planning and sequencing clinical work, observation and discussion of recorded surgeries, prosthodontic procedures, and workshops on surgical guides and soft and hard tissue grafting procedures. Knowledge and management of specific devices and tools used in implant dentistry will improve the quality and predictability of the treatment.

## Registration Basics

### Full conference registration includes:

- Three nights accommodation at Danford's Hotel and Marina (check-in Sunday evening, check-out Wednesday)
- Transportation from the hotel to Stony Brook University (Monday-Wednesday)
- Program Welcome (Sunday evening)
- One full day of presentations and lectures from renowned international faculty
- Two full days of hands on experience in the Stony Brook University Gabor Inke Anatomy Lab
- Continental breakfasts (Monday-Wednesday)
- Lunch (Monday-Wednesday)
- Dinner at local restaurants (Monday-Tuesday)
- Closing Reception & Presentation of Certificates

## How to Register

To register online visit:

<http://dentistry.stonybrookmedicine.edu/CDE/Advanced-implant>



# An Exciting Line-up Of Speakers and Hands-on Instructors



## Program Sessions

The following are abstracts for each of the basic modules for the International Program in Implant Dentistry:

### Session One - Basics and Beyond (3 days)

During the first session of this comprehensive implant training program the following topics are covered: Anatomy, bone physiology, biology of osseointegration, patient evaluation for implant treatment, risk factors, vertical & horizontal spaces of occlusion, bone density, step-by-step implant surgical placement protocols including immediate implant placement and osteotomy techniques, restorative procedures including advanced treatment concepts. **Hands-on workshops are performed by the class utilizing the CBCT data for anatomy and diagnostics and is followed by virtual implant planning.**

### Session Two - Intermediate Implant Techniques (3 days)

Intermediate surgical and prosthetic protocols including immediate implant placement and immediate load techniques for single and full arch cases including indications and contraindications, computer guided implant placement and implant complications will be discussed. Implant prosthodontics using CAD/CAM design will highlight the prosthetic portion of this session. **Hands-on human cadaver workshops are performed by the class utilizing the guided surgery software and guided/non-guided implant placement.**

### Session Three - Advanced Surgical Implant Techniques (3 days)

Advanced implant surgical techniques covered in this session include: Advanced flap design, suturing, alveolar ridge expansion using split cortical technique, guided bone regeneration and bone grafting before, during and after implant placement. This session will include lectures on pharmacology in oral implantology. **Hands-on human cadaver workshops: Suturing and bone grafting workshop using regenerative materials are performed by the class and live surgery demonstrations by faculty.**

### Session Four - Advanced Prosthetic Implant Techniques (3 days)

During this session the lectures focus on advanced implant prosthodontics as well as a discussion on the lab aspect of implant prosthodontics including full-arch restorations, anterior esthetics, immediate loading, All-on-4 procedure and implant bars and frameworks. This comprehensive restorative implant training program covers all major digital technologies related to implant dentistry including optical scanning (intraoral and laboratory based scanning), CAD design, CAM manufacturing, advanced chairside CAD/CAM restorations, laboratory CAD/CAM and optimized digital workflow for implant dentistry. **Hands-on human cadaver workshops: Performing the All-on-4 treatment including implant placement and prosthetic restoration. Digital workshop including proper scanning technique and CAD design of partial and full coverage restorations.**

# Logistics

## PROGRAM LOCATION:

Stony Brook University is located in the village of Stony Brook, New York, a residential neighborhood 65 miles east of New York City.

## ACCOMMODATIONS:

Nestled in the heart of historic Port Jefferson, Danford's on the Sound provides quality accommodations, many with harbor views.

Day 1 will be held in the Stony Brook University Wang Center



Days 2 and 3 will be held in the Gabor Inke Anatomy Lab in the Stony Brook University Medical Center



**FROM ITS BEGINNINGS A HALF-CENTURY AGO, STONY BROOK UNIVERSITY HAS BEEN CHARACTERIZED** by innovation, energy and progress, transforming the lives of people who earn degrees, work and make groundbreaking discoveries here. A dramatic trajectory of growth has turned what was once a small teacher preparation college into an internationally recognized research institution that is changing the world.

## FLIGHT INFORMATION:

Long Island's Islip-MacArthur Airport is 16 miles from the campus and is serviced by direct flights by major airlines and commuter lines.

New York City Area Airports (JFK, LaGuardia and Newark) are 50 miles to the west. From Kennedy Airport, you may take the Air Train to Jamaica Station and transfer to the LIRR for the train to Stony Brook / Port Jefferson.

Danford's Hotel and Marina is just 3.5 miles from Stony Brook's main campus. Transportation to and from Stony Brook and Danford's will be provided in the morning and in the evening Monday-Wednesday.



**STONY BROOK UNIVERSITY**

School of Dental Medicine

Stony Brook, NY 11794-8709

# Program Fees and Policies

To register, please visit <http://dentistry.stonybrookmedicine.edu/CDE/Advanced-implant>. The Office of Continuing Education strongly recommends you utilize the online registration system. However, if you require other methods, please contact Hilary.Wolfskill@stonybrook.edu. The Office of Continuing Education is also happy to provide an invoice if requested.

## FULL PROGRAM

**Participants With Full Accommodations:** \$4,998

**Local Participants with No Accommodations:** \$3,998

**\*\* Special pricing for Stony Brook University Alumni\*\***

Call for details: (631) 632-5468

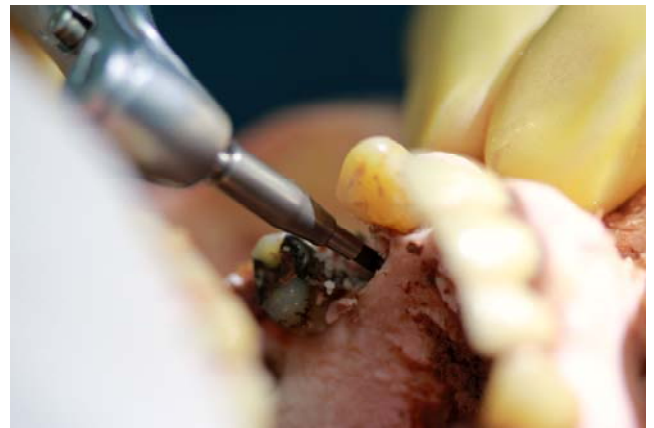
Refunds will only be issued thirty days prior to the first day of the program. Cancellations made within thirty days of the program will be given credit for a future Implant Program session. If you are unable to attend all three days of the program but wish to participate, or if you are registering a part of five (5) or more, please contact the Office of Continuing Education directly at (631) 632-5468 or via email at Hilary.Wolfskill@stonybrook.edu.

## VISA AND IMMIGRATION

If you are an international participant and require a Letter of Invitation, please feel free to contact us at (631) 632-5468 or via email at Hilary.Wolfskill@stonybrook.edu.

The International Implant Program is subject to cancellation due to under-enrollment and resource availability. In the event of a cancellation, fees can be applied to another program or refunded.

Thank you to our hosts



*Stony Brook University, School of Dental Medicine is an ADA CERP Recognized Provider approved by the American Dental Association.*

*ADA CERP is a service of the American Dental Association to assist dental professionals in identifying quality providers of continuing dental education. ADA CERP does not approve or endorse individual courses or instructors, nor does it imply acceptance of credit hours by boards of dentistry.*

*Concerns or complaints about a CE provider may be directed to the provider or to ADA CERP at [www.ada.org/cerp](http://www.ada.org/cerp).*

